

# BATTERY GRIP SLR CAMERAS USER

## FAQs about BATTERY GRIP SLR CAMERAS USER

**What is the use of battery grip for DSLR camera?** A battery grip is an accessory for an SLR/DSLR (and occasionally other cameras), which allows the camera to hold multiple batteries to extend the battery life of the camera, and adds a vertical grip with an extra shutter release (and other controls), facilitating the shooting of portrait photography.

**When to use battery grip?** In situations where making a battery change is inconvenient, a battery grip makes shooting an awful lot simpler. For instance, sports and wildlife photographers often don't have the time or space to make a battery change, so that extra capacity goes a long way in enabling them to get the shots they need.

**What is a camera grip for?** Firm and secure grip The ingenious design of the grip lets you hold the camera firmly. The Vertical Grip allows you to shoot photos easily and enjoyably regardless of whether you hold the camera horizontally or vertically, making it easier to concentrate on the subject and composition.

**Does anyone still use SLR cameras?** Stagnant though the DSLR market is in terms of new gear, people are still using these cameras, and researching deals on them, in decent numbers. So what is it about these somewhat forgotten cameras that still appeals?

**Does a battery grip improve performance?** ? Improves hand feel The two main functions of the battery grip are to increase the battery life of the SLR and improve the battery grip feel when shooting vertically. Improved battery grip feels when shooting vertically. Most ordinary enthusiasts will not have a very obvious feeling.

**Is it OK to leave battery in DSLR?** Remove the battery from the camera or charger when not in use and replace the terminal cover. These devices draw minute amounts of charge even when off and could draw the battery down to the point that it will no longer function.

**Can you use a battery grip with only one battery?** If you buy a battery grip to improve the handling of your camera, you can use it with just a single battery pack inserted – the battery you have removed from the camera. Everything will work normally.

**How do I know what grip to use?** The main rule with grip size is that you want a handle big enough so that there is some space between the tips of your fingers and your hand (like the image on the left). If your fingers go all the way around the handle and run back into your hand (like the image on the right), you need a larger grip size.

**What is the function of the hand grip on a camera?** The handgrip is a protrusion on the right-hand side of a camera that is ergonomically shaped to be comfortable when held in the hand. This is almost always the primary contact point between the photographer and their camera, so it is sized to make it large enough to grip and hold the weight of the camera.

**Do I need a battery grip for my DSLR?**

## **How do you hold a camera like a pro?**

**How do photographers hold their camera?** You need to hold the camera as steady as possible. Hold the camera's handgrip in your right hand and cradle the camera body or lens with your left. Keep your elbows propped lightly against your torso for support and place one foot half a pace ahead of the other to keep your upper body stable.

**Do old SLR cameras have any value?** These timeless relics not only evoke nostalgia but also hold significant value, making them sought-after treasures for collectors and enthusiasts alike. Beyond their nostalgic appeal, vintage film cameras boast intrinsic worth that transcends their functionality and historical significance.

**What are SLR cameras good for?** SLR cameras provide photographers with precision; they provide a viewing image that will be exposed onto the negative exactly as it is seen through the lens. There is no parallax error, and exact focus can be confirmed by eye—especially in macro photography and when photographing using long focus lenses.

## **What can you do with old SLR cameras?**

**What is the purpose of the battery hold down?** A battery hold down secures the battery in place to prevent it from moving when driving. Using a battery hold down helps your battery stay safe, resist vibration, remain efficient, and last a long time.

**What does a battery clip holder do?** The primary function of a battery holder is to keep cells fixed in place safely and securely while conveying power from the batteries to the device in question. External connections on battery holders are most often made by contacts either with pins, surface mount feet, soldered lugs or via a set of wire leads.

**What is the use of power grip?** This grip is used when large forces are to be exerted. Depending upon the direction of the line of force, three subcategories of the power grip are defined: (1) force parallel to the forearm (e.g., saw), (2) force at an angle to the forearm (e.g., hammer), and (3) torque about the forearm (e.g., corkscrew).

**What is the function of the camera hand grip?** The primary purpose of camera hand grips is to improve ergonomics for more comfortable shooting. Some clip onto cameras, while others are more substantial, and attach using tripod mounting screws.

Welcoming Electronic Book Trends:

1. Integration of Interactive Media Elements
2. Engaging and Game-based Digital Books

Understanding Battery grip slr cameras user Formats

1. Electronic Publication, PDF, MOBI, and Others
2. Battery grip slr cameras user Suitability with Gadgets
3. Battery grip slr cameras user Enhanced eBook Features

Obtaining Battery grip slr cameras user

1. No-cost and Paid Digital Books
2. Battery grip slr cameras user Public Domain eBooks
3. Battery grip slr cameras user Subscription Services
4. Budget-Friendly Options

## Finding Reliable Information on Battery grip slr cameras user

1. Verifying Electronic Book Material
2. Recognizing Credible References

## Supporting Lifelong Growth

1. Using Electronic Books for Personal Growth
2. Exploring Educational Electronic Books

## Staying Engaged with Battery grip slr cameras user

1. Becoming Part of Online Reading Communities
2. Joining Virtual Literary Circles
3. Keeping Up with Novelists and Book Producers of Battery grip slr cameras user

## Selecting the Right Electronic Book Service

1. Popular eBook Services
2. Characteristics to Look for in a Battery grip slr cameras user
3. Easy-to-Use Interface

## Discovering Electronic Book Recommendations from Battery grip slr cameras user

1. Customized Recommendations
2. Audience Reviews and Ratings of Battery grip slr cameras user
3. Bestseller Lists

## Improving Your Book Experience

1. Changeable Fonts and Text Sizes of Battery grip slr cameras user
2. Emphasizing and Jotting Down Notes in Battery grip slr cameras user
3. Immersive Elements in Battery grip slr cameras user

## Balancing eBooks and Physical Books

1. Battery grip slr cameras user Pros of a Digital Library
2. Building a Diverse Reading Collection of Battery grip slr cameras user

## Cultivating a Reading Routine

1. Establishing Literary Goals for Battery grip slr cameras user
2. Making Dedicated Reading Time

## Grasping the eBook Industry

1. The Rise of eBooks
2. Pros of Digital Books Over Traditional Books

## Exploring Battery grip slr cameras user

1. Investigating Different Categories
2. Weighing Fiction vs. Non-Fiction
3. Identifying Your Book Goals

**Battery Grip Slr Cameras User**, Dec 14, 2007 — Digital SLR Photography All-in-One For Dummies  
Robert Correll,2017-01-10 The complete beginner's guide to DSLR photography It doesn't matter ...  
bartabacny com/content/detail/HomePages/Battery\_Grip\_Slr\_Cameras\_User pdf

**Battery grip - Wikipedia**, It serves two purposes: 1) it allows two batteries to be installed for extended shooting sessions; 2) it provides a vertical shutter release. en wikipedia org/wiki/Battery\_grip#:~:text=A battery grip is an,the shooting of portrait photography

**Why Use a Battery Grip? - Park Cameras**, Personally, I'm not a fan of battery grips. A large camera becomes cumbersome and I find that battery drain is faster with a grip than without. parkcameras com/blog/buying-guides/why-use-a-battery-grip\_buying-42#:~:text=In situations where making a,get the

What is a camera grip for? Does anyone still use SLR cameras? Does a battery grip improve performance?

<https://a4ssinc.com>

shots they need

**Vertical Grip | VG-C4EM - Sony Australia**, Nov 24, 2017 — The battery grip gives some extra security about getting a battery change ready when you don't have much time also. Whatever style of battery ... [sony.com.au/electronics/interchangeable-lens-cameras-vertical-grips/vg-c4em#:~:text=firm and secure grip,on the subject and composition](https://www.sony.com.au/electronics/interchangeable-lens-cameras-vertical-grips/vg-c4em#:~:text=firm%20and%20secure%20grip,on%20the%20subject%20and%20composition)

**If DSLR cameras are dead, why are they still so popular? Here are 5 ...**, Apr 16, 2012 — So, the pros are that it allows easier, steadier camera use in portrait orientation, balances the camera well, and gives you longer shooting ... [techradar.com/cameras/dslrs/if-dslr-cameras-are-dead-why-are-they-still-so-popular-here-are-5-reasons#:~:text=Stagnant though the DSLR market,forgotten cameras that still appeals%3F](https://www.techradar.com/cameras/dslrs/if-dslr-cameras-are-dead-why-are-they-still-so-popular-here-are-5-reasons#:~:text=Stagnant%20though%20the%20DSLR%20market,forgotten%20cameras%20that%20still%20appeals%3F)

**Canon BG-E1 Battery Grip - Camera Hacker**, A battery grip is an accessory for an SLR/DSLR (and occasionally other cameras), which allows the camera to hold multiple batteries to extend the battery ... [camerahacker.com/Canon\\_Accessory/BG-E1.shtml](https://www.camerahacker.com/Canon_Accessory/BG-E1.shtml)

**What are your thoughts on battery grip? : r/photography**, Jun 5, 2019 — Using a shutter cable on a battery grip is hazardous to the health of your camera. It means you walk around with the ports exposed, which is ... [reddit.com/r/photography/comments/5d7e5t/what\\_are\\_your\\_thoughts\\_on\\_battery\\_grip/](https://www.reddit.com/r/photography/comments/5d7e5t/what_are_your_thoughts_on_battery_grip/)

**Battery Grip? Why?: Open Talk Forum**, This hand grip is specifically designed for Canon EOS RP Digital SLR Camera. It is made of high-quality rubber, which is sturdy and durable. The hand grip is ... [dpreview.com/forums/thread/4228139](https://www.dpreview.com/forums/thread/4228139)

**Is it worth buying a battery grip for my camera?**, The Battery Grip is a comfortable and secure way to extend your battery life. It allows you to install one battery to your camera to effectively double your ... [photo.stackexchange.com/questions/22483/is-it-worth-buying-a-battery-grip-for-my-camera](https://www.photo.stackexchange.com/questions/22483/is-it-worth-buying-a-battery-grip-for-my-camera)

**Battery grip**, Jul 1, 2022 — A battery grip works by alternating which battery is being used, so that the two batteries are drained at close to the same rate. The battery ... [en.wikipedia.org/wiki/Battery\\_grip](https://en.wikipedia.org/wiki/Battery_grip)

**What battery grip for Rebel T7i, Canon or afterma...**, [community.usa.canon.com/t5/EOS-DSLR-Mirrorless-Cameras/What-battery-grip-for-Rebel-T7i-Canon-or-aftermarket-Thanks/m-p/275217](https://community.usa.canon.com/t5/EOS-DSLR-Mirrorless-Cameras/What-battery-grip-for-Rebel-T7i-Canon-or-aftermarket-Thanks/m-p/275217)

**Newmowa EOS RP Replacement Vertical Battery Grip ...**, [amazon.com/Newmowa-Replacement-Vertical-Battery-Digital/dp/B07ZLP128B](https://www.amazon.com/Newmowa-Replacement-Vertical-Battery-Digital/dp/B07ZLP128B)

**Battery Grips**, [abesofmaine.com/Store/Photography/Battery\\_Grips/](https://www.abesofmaine.com/Store/Photography/Battery_Grips/)

**Battery Grip for EOS R5**, [community.usa.canon.com/t5/Camera-Accessories/Battery-Grip-for-EOS-R5/m-p/377811](https://community.usa.canon.com/t5/Camera-Accessories/Battery-Grip-for-EOS-R5/m-p/377811)

## Reference of What is the use of battery grip for DSLR camera?

1. Digital single-lens reflex camera single-lens reflex camera (digital SLR or DSLR) is a digital camera that combines the optics and mechanisms of a single-lens reflex camera with a solid-state...
2. Digital camera CR-V3 batteries. Some battery grips for DSLRs come with a separate holder to accommodate AA cells as an external power source. When digital cameras became...
3. Fujifilm X series (redirect from Fujifilm X camera) previously had been used for a small-sensor bridge camera, the X-S1, was revived with the X-S10 in October 2020. This new X-S camera is a DSLR-style offering...
4. Hasselblad (redirect from Moon camera) for its classic analog medium-format cameras that used a waist-level viewfinder. Perhaps the most famous use of the Hasselblad camera was during the Apollo...
5. Micro Four Thirds system (redirect from List of Micro Four Thirds system cameras) on DSLRs. To this day, most Micro Four Thirds cameras continue to use a contrast-based focusing system. Although some current models, such as the Olympus...

6. Camcorder (redirect from Video camera recorder) able to operate solely on external power with no battery inserted. Video cameras originally designed for television broadcast were large and heavy, mounted...
7. Nikon D300 (category Nikon DSLR cameras) the camera; more recent packages include a 30-day trial version. The MB-D10 is an optional accessory battery pack that provides a vertical grip as well...
8. Canon EOS 90D (category Canon EOS DSLR cameras) The Canon EOS 90D is a digital single-lens reflex (DSLR) camera released by Canon on August 28, 2019. It has a body-only MSRP of US\$1199, which is the...
9. Canon EOS 7D (category Canon EOS DSLR cameras) September 2009 with a suggested retail price of US\$1,699, and was marketed as a semi-professional DSLR camera. Among its features are an 18.0 effective megapixel...
10. Camera phone A camera phone is a mobile phone which is able to capture photographs and often record video using one or more built-in digital cameras. It can also send...
11. DJI Ronin (category Digital movie cameras) cinema and DSLR cameras of the time. Due to similarities in the naming convention of Ronin products, DJI presently refers to this model as the "Ronin 1...
12. Nikon Z7 (category Nikon MILC cameras) 2018, for release in September 2018. It was the first camera to use Nikon's new Z-mount system; the second model, released in November 2018, was the 24.5...
13. Canon EOS 5D Mark III (category Canon EOS DSLR cameras) The Canon EOS 5D Mark III is a professional-grade 22.3 megapixel full-frame digital single-lens reflex (DSLR) camera made by Canon. Succeeding the EOS...
14. Flash (photography) (redirect from Camera flash) strobes, powered by special battery packs or connected to mains power. They are either synchronized with the camera using a flash synchronization cable...
15. Nikon D7200 (category Nikon DSLR cameras) availability of a battery grip, and metering support for old manual focus Nikon AI type (Non-CPU) lenses), which have been removed from the D7500. Being the successor...
16. Canon EOS 77D (category Canon EOS DSLR cameras) semi-pro crowd. Canon does not offer a battery grip for this model, although some aftermarket grips are available, with the shutter button working via an external...
17. Canon EOS 650D (category Canon EOS DSLR cameras) The Canon EOS 650D, known as the Kiss X6i in Japan or the Rebel T4i in America, is an 18.0 megapixels digital single-lens reflex camera (DSLR), announced...
18. Smartphone (redirect from Ethical, legal and security issues of Smartphones) Smartphones Continue to Hurt Camera Sales". VOA. July 6, 2022. Retrieved March 5, 2023. "Mobile Photography vs. the DSLR | B&H eXplora". www.bhphotovideo...
19. Phase One (company) (category Digital camera backs) Li-ion battery with up to 10,000 captures on one charge Rugged construction for high volume production use The Phase One V-Grip Air vertical grip is compatible...
20. Samsung Galaxy S8 (category Use dmy dates from June 2017) claims that the phones carry new, custom camera modules. In addition, the S8 has a Pro Mode, which functions similarly to a DSLR camera and has custom...

**What is IBM Domino used for?** Domino® provides an integrated Web application server that can host Web sites that both Internet and intranet clients can access, and that can serve up pages that are

stored in the file system or in a Domino database.

### **How to set up a Domino server?**

**What is the purpose of domino?** A domino set is a generic gaming device, similar to playing cards or dice, in that a variety of games can be played with a set. Another form of entertainment using domino pieces is the practice of domino toppling.

**How does a domino tool work?** The tool implementation by Festool involves a router-like spinning shaft with a special shape cutter bit. The shaft also moves sideways, allowing to cut full round-ended mortises in a single operation.

**How do you set up a domino?** Setup. To start, place all the tiles facedown on the table, “shuffling” them by mixing them around randomly. In a two-player game, each player draws seven tiles, turning them over to look at them without revealing them to the other player. If there are three to four players, draw five each.

**What tool is used to set up dominoes?** The speed template is the perfect tool to quickly and easily set up your dominoes without the stress of knocking over your setup. The precision tool makes it even easier to handle your mini sized dominoes.

**How to start Domino service?** To start the server Click Start > All Programs > IBM Applications > IBM Domino Server.

**What is domino software used for?** Domino Designer is an integrated application development environment that lets developers and Web site designers create, manage, and deploy secure, interactive applications.

**What are Dominos actually used for?** They are most commonly used for playing positional games. In positional games each player in turn places a domino edge to edge against another in such a way that the adjacent faces are either identical (e.g., 5 to 5) or form some specified total.

**What is domino known for?** Domino's started out small, with just one store in Ypsilanti, Michigan, in 1960. Fast forward more than 60 years, and Domino's has grown to become one of the most recognized and leading pizza brands in the world.

**What is the Domino's purpose?** Our Purpose & Values At Domino's, we've always been about bringing people closer, connecting them through the worlds best bonding food: Pizza. Simply put... our pizza brings people closer.

**For Ibm Domino Installation Manual And User Guide**, Jul 14, 2023 — Ibm Domino Installation Manual And. User Guide free PDF files is Open. Library. ... While downloading. For Ibm Domino Installation Manual. And ... newsproducts brown columbia edu/textbook-solutions/uploaded-files/index\_htm\_files/For\_Ibm\_Domino\_Installation\_Manual\_And\_User\_Guide pdf

**For Ibm Domino Installation Manual And User Guide**, Ibm Domino Installation Manual And User Guide. Where to download For Ibm Domino Installation Manual And User. Guide online for free? Are you looking for For ... newsproducts brown columbia edu/textbook-solutions/browse/HomePages/for\_ibm\_domino\_installation\_manual\_and\_user\_guide pdf

**Domino server installation - Product Documentation**, This topic guides you through the steps for installing Domino® interactively on a UNIX™ system. Installing Domino on IBM i. Before installing a Domino® server ... help heltechsw com/domino/11 0 1/admin/inst\_dominoserverinstallation\_c.html

**For Ibm Domino Installation Manual And User Guide**, Another reliable platform for downloading For. Ibm Domino Installation Manual And. User Guide free PDF files is Open. Library. ... For Ibm Domino Installation ... sympa02 bard edu/papersCollection/Resources/filedownload ashx/for\_ibm\_domino\_installation

manual and user guide pdf

**The Domino Web server - IBM**, View a roadmap to instructions for installation and first set up of an IBM Lotus Domino server, including installation of the Lotus Domino Administrator ... [ibm.com/docs/en/domino/1000?topic=servers-domino-web-server#:~:text=Domino%C2%AE provides an integrated,or in a Domino database](https://ibm.com/docs/en/domino/1000?topic=servers-domino-web-server#:~:text=Domino%C2%AE%20provides%20an%20integrated,or%20in%20a%20Domino%20database)

**Configuring Lotus Domino - IBM**, View a roadmap to instructions for installation and first set up of an IBM® Domino® server, including installation of the Domino Administrator client software. [ibm.com/docs/en/was-nd/855?topic=files-configuring-lotus-domino](https://ibm.com/docs/en/was-nd/855?topic=files-configuring-lotus-domino)

**Lotus Domino server installation and server setup reference**, Aug 21, 2020 — ESET MAIL SECURITY FOR IBM DOMINO Installation Manual and User Guide. Topics: manualzz, manuals, computers & electronics, software, computer ... [ibm.com/docs/en/websphere-portal/800?topic=portlets-lotus-domino-server-installation-server-setup-reference](https://ibm.com/docs/en/websphere-portal/800?topic=portlets-lotus-domino-server-installation-server-setup-reference)

**Domino server installation and server setup reference**, For IBM® Lotus® Domino™ server installation and setup, see this Domino Administrator help. Note This Domino Administrator documentation contains information ... [ibm.com/docs/SSHRKX\\_850/mp/collab/i\\_domi\\_r\\_sv\\_dom\\_install.html](https://ibm.com/docs/SSHRKX_850/mp/collab/i_domi_r_sv_dom_install.html)

**ESET MAIL SECURITY FOR IBM DOMINO Installation ...**, Installing. Use this documentation to install the IBM® Domino® server and subsequently deploy the IBM Notes® client. Installing and upgrading Domino® servers. [archive.org/details/manualzz-id-11893725](https://archive.org/details/manualzz-id-11893725)

**Lotus Notes installation documentation roadmap**, iv Data Protection for IBM Domino for Windows: Installation and User's Guide ... documentation for information about how to install an alternate partition.[http://webmail.dotd.louisiana.gov/help/help8\\_admin.nsf/f4b82fbb75e942a6852566ac0037f284/776013a991181a27852572fa004e28ec?OpenDocument](http://webmail.dotd.louisiana.gov/help/help8_admin.nsf/f4b82fbb75e942a6852566ac0037f284/776013a991181a27852572fa004e28ec?OpenDocument)

**Prerequisites for installing Domino on IBM i**, [help.hcl-software.com/domino/901/admin/admin/inst\\_prerequisitesforinstallingdominoonibmi\\_c.html](https://help.hcl-software.com/domino/901/admin/admin/inst_prerequisitesforinstallingdominoonibmi_c.html)

**Data Protection for IBM Domino for Windows**, [ibm.com/docs/SSGSG7\\_710/com.ibm.itsm.mail.dom.doc/b\\_dp\\_dom\\_win.pdf](https://ibm.com/docs/SSGSG7_710/com.ibm.itsm.mail.dom.doc/b_dp_dom_win.pdf)

**Is there a manual for C?** The GNU C Reference Manual is a reference for the C programming language, as implemented by the GNU C Compiler. This manual is strictly a reference, not a tutorial. Its aim is to cover every linguistic construct in GNU C, but not the library functions (which are documented elsewhere).

**Is C user friendly?** C is a Middle-Level Language. The middle-level languages are somewhere between the Low-level machine understandable assembly languages and High-Level user friendly languages. Being a middle-level language, C reduces the gap between the low-level and high-level languages.

**What is the data type of gnu?** The most common data types in GNU Radio blocks are Complex Float 32 in blue and Float 32 in orange. Additional colors include the Integer 16 (or short) data type in yellow and the Integer 8 (or char) data type in purple.

**Is there an official C documentation?** The "official" documentation for the C programming language is the ISO Standard. You can purchase it there, or from another standards organisation (which might be cheaper!).

**How to learn C easily?** The best way to learn C programming is to start by reading C programming books or tutorials online. Go through beginner tutorials to grasp the basics like data types, loops, functions, and arrays. Make sure to code alongside the tutorials and get hands-on practice with simple programs.

**How to use C in PC?**

**Is C a dying language?** One thing is for sure that C is not going to die soon since this is a de-facto programming language for almost all organisations, and altering it from the core is merely impossible.

**Is C easier than Python?** Python is easier than C to learn. But C helps to learn the fundamentals of programming while Python focuses on doing the job. Because Python is made in C doesn't mean you need to learn it. It is supposed to be an opposite and make a fast learning environment, unlike C.

**Why do hackers use C?** C Programming High-level languages make programming easier to read and write by using words instead of numbers and letters. Hackers can use C as a hacking language because it's easy to modify without having to understand low-level assembly or machine code.

**What is C in a manual?**

**How do I start a manual C?**

**How to run C program manually?** After the file has been compiled, the next step is to run the C program. For this, press the run icon at the top of the window, or press Ctrl + F10 to run the executable file created.

**Can I code C on my phone?** If you are asking if you can create on your desktop/laptop computer ad-hoc C programs which will be installed and ran on a smartphone, the answer is yes, both for Android (via the Android NDK) and iOS (you normally use Objective C, which is a superset of C).

**C User's Guide**, The OPEN LOOK and Sun™ Graphical User Interface was developed by Sun Microsystems, Inc. for its users and licensees. Sun acknowledges the pioneering efforts of ... docs.oracle.com/cd/E19059-01/fortec6u2/806-7984/806-7984.pdf

**The GNU C Reference Manual**, by T Rothwell · 2007 · Cited by 16 — This is a reference manual for the C programming language as implemented by the GNU. Compiler Collection (GCC). Specifically, this manual aims to document: .gnu.org/s/gnu-c-manual/gnu-c-manual.pdf

**C User's Guide**, C User's Guide. Page 21. xxi. Preface. This manual, the C User's Guide describes the C 4.2 compiler. The standard language is referred to as ANSI C. The ...http://sites.science.oregonstate.edu/~landaur/COURSES/Handouts/Cusers.pdf

**The C-- Language Reference Manual**, C-- is a portable assembly language designed to be a good backend for high level languages (particularly for those that make use of garbage-collection) ... microsoft.com/en-us/research/wp-content/uploads/1998/01/pal-manual.pdf

**The GNU C Reference Manual - GNU Project - Free Software Foundation**, by DM Ritchie · Cited by 106 — This paper is a manual only for the C language itself as implemented on the PDP-11. However, hints are given occasionally in the text of implementation- ... gnu.org/software/gnu-c-manual/#:~:text=The GNU C Reference Manual is a reference for the,(which are documented elsewhere)

**Why learning C Programming is a must? - GeeksforGeeks**, The C/C++ Development Toolkit (CDT) is a collection of Eclipse-based features that provides the capability to create, edit, navigate, build, and debug projects ... geeksforgeeks.org/why-learning-c-programming-is-a-must/#:~:text=C is a Middle%2DLevel,level and high%2Dlevel languages

**Signal Data Types - GNU Radio Wiki**, 1. Introduction to the C Compiler · Operating Environments · Standards Conformance · Organization of the Compiler · C-Related Programming Tools · 2. cc Compiler ... wiki.gnuradio.org/index.php/Signal\_Data\_Types#:~:text=The most common data types,char) data type in purple

**is there any official documentation of C programming : r/C\_Programming**, This manual contains the following additions and deletions: • Information about OpenMP C/C++ Application Program Interface (API) multiprocessing directives has. reddit

com/r/C\_Programming/comments/10fpd7w/is\_there\_any\_official\_documentation\_of\_c/#:~:text=The%22official%22 documentation for the,which might be cheaper!)

**C Reference Manual**, Page 1. 1. CCS C Compiler Manual. PCB, PCM, PCH, and PCD. November 2021 ...



User Data Dir. • The same directory as the source.directories in the ccsc.ini ... bell-labs com/usr/dmr/ /cman pdf

**C/C++ Development User Guide**, 3 Jan 2012 — C User's Guide. Describes the C compiler options, Sun-specific ... Library Header Files," C++ Library Reference, Tools.h++ User's Guide, Tools.h++ ... help eclipse org/latest/topic/org eclipse cdt doc user/concepts/cdt\_o\_home htm

**C User's Guide: Contents**, dcs ed ac uk/home/SUNWspro/3 0/c-compiler/user\_guide/index.html

**C Language Reference Manual**, cs.columbia.edu/~sedwards/papers/sgi1999c.pdf

**CCS C Compiler Manual**, ccsinfo.com/downloads/ccs\_c\_manual.pdf

**C++ User's Guide**, docs.oracle.com/cd/E19957-01/806-3572/806-3572.pdf

**What is iScala used for?** Epicor iScala is a comprehensive ERP solution designed for SMBs for real-time collaboration across various industries. With embedded reporting, it streamlines financial management and addresses multi-company deployments, cross-border trading, and compliance.

**What is the difference between user guide and user manual?** While user manuals are more comprehensive, providing in-depth technical information and troubleshooting details, user guides are usually more concise, offering step-by-step instructions for users to grasp essential functionalities and navigate a product with ease.

**How to create a user guide with screenshots?**

**How to create a user guide manual?**

**What does ERP mean in accounting?** In accounting, the acronym ERP stands for enterprise resource planning – which is a type of business management software. ERP finance modules offer many of the same features as accounting software, such as tools for accounts receivable and payable, general ledger, expense management, reporting and analysis, and more.

**What is the purpose of using the extended ERP system?** The extended ERP module integrates with the accounting and Finance ERP component in order to track and manage the receivables and payables of finance accurately. A number of channels are involved in the delivery and production of services and products.

**What is the main function of user guide?** User guides serve as a roadmap for users, helping them understand and navigate a product's features, functions, and capabilities. By providing clear instructions, tips, and best practices, user guides empower users to make the most out of a product, ensuring a positive and seamless user experience.

**What person should a user guide be written in?** Avoid Using the First Person There's no "I" in team, and there shouldn't be any in your writing. You have a more authoritative tone of voice by not using statements such as "I did this" in your instructions.

**How does user guide benefit?**

**Can you get any info from a screenshot?** Screenshots, like any other digital file, can contain metadata that provides valuable information about the image. Some typical examples of metadata in screenshots include the file format, dimensions, color profile, and the date and time at which the screenshot was captured.

**What is user guide template?** Free user guide template User guides cover all aspects of a product, including its design, operation, potential issues, problems and more. They can include: Product description content. Product features. Product installation guide.

**What are the two methods that can be used to take a screenshot on a Windows computer?** If you using the keyboard on your laptop: press Windows key +Function key + PrtScn. If you're using an external keyboard: press the Windows key + PrtScn. This saves the entire screen as an image file. You can find it in the "Pictures" folder, in a subfolder called "Screenshots."

**Where can I download user manuals for free?**

**What is in a user guide pdf?**

**How can I create a guide?**

**Is QuickBooks an ERP system?** The standard version of QuickBooks Online is not an ERP system. However, it does also have a lot of crossover functions with ERP software.

**What does SAP stand for?** While SAP is commonly referred to in its abbreviated form, it actually stands for Systems, Applications and Products in Data Processing. While the full name accurately describes what's on offer, the abbreviation was chosen to create a focus on the core software.

**What does MRP stand for?** MRP = Material Requirements Planning MRP stands for Material Requirements Planning and is a software solution that helps manufacturers calculate more precisely what materials they require, at what time, and in what quantities.

**What is the most common ERP system?**

**What is at the heart of an ERP system?** Central database. A central database is a collection of data kept in one location. It is said to be at the heart of the ERP system.

**What are the 5 components of ERP?** What are the 5 components of ERP? Five common components of ERP systems are accounting and financial management, human resources or human capital management, customer relationship management, business intelligence and supply chain management.

**How long should a user guide be?** Introduction to User Guides A user guide is essentially a book-length document containing instructions on installing, using, or troubleshooting a hardware or software product. A user guide can be very brief—for example, only 10 or 20 pages or it can be a full-length book of 200 pages or more.

**What is a software user guide?** User guides are a type of technical documentation that enables customers and end-users with step-by-step instructions on how to execute a task or process. An example of when you'll encounter a user guide is when you purchase a new physical product (like a piece of furniture) or a digital product or software.

**What is the first page of a manual called?** The first part of a manual is known as its front matter. The first section is the title page, which should be written in such a way as to notify the reader what the manual is about. A visual of the subject matter of the manual is often included to get this point across.

**How do you organize a user guide?** You can use page protectors to hold each manual and this would allow you to store the receipts for the item as well. You can also use tabs that will help with creating categories. Categorizing by item type, room or date purchased could make things easier to find.

**What font should I use for user guide?** Best Font for Technical Documents Experts recommend a mix of Serif and non-Serif fonts. For the headings, non-serif fonts like Arial and Helvetic are recommended and for the body, Serif fonts like Roman, Georgia, and New Times Roman can be used.

**How do you reference a user guide?** Author(s) of software. Title of manual. Edition ed. Place of publication: Publisher; Year of publication.

**What does Epicor do?** From your warehouse to the world, Epicor solutions help you with big-picture inventory management, forecasting, and timely delivery.

**What is an enterprise content management system used for?** An Enterprise Content Management (ECM) system enables organizations to securely manage content and information throughout its lifecycle. It enables unstructured information — such as Word documents, PDFs, emails and scanned images — to be securely stored and made accessible to authorized users.

**What is Dynamics ERP used for?** Microsoft Dynamics 365 ERP is Azure cloud and on-premises software for managing business processes with AI-enabled intelligent workflows. The Microsoft Dynamics 365 user interface accesses other Microsoft software, including Power Platform and Office 365 (including Excel).

**What is a file management system an application that is used for?** A file management system is an application that is used to store, arrange, and access files stored on a disk or other storage location.

**Is Epicor similar to SAP?** With respect to features and functionalities, the SAP products and Epicor offers very strong and almost similar features. But SAP Business One depends on a lot of add on third party components to provide a full solution for customers.

**Is Epicor easy to use?** The Bottom Line. Epicor ERP is aimed at small and mid-sized businesses (SMBs), especially those specializing in manufacturing and distribution. It's not overly easy to use, but it's a good value.

**What is the new name for Epicor?** Kinetic is a global cloud ERP solution designed for and with manufacturers, helping them maximize profitability with real-time business intelligence and built-in collaboration tools.

**What is ECM in simple words?** Enterprise content management is a set of defined processes, strategies and tools that allows a business to effectively obtain, organize, store and deliver critical information to its employees, business stakeholders and customers.

**What are the five elements of ECM?** By understanding the key elements that constitute a robust enterprise content management (ECM) system, businesses can streamline their workflows, enhance collaboration, and gain a competitive edge. The components of enterprise content management are capture, manage, store, preserve, and deliver.

**Why do people use content management systems?** With a CMS, you can create, manage, modify, and publish content in a user-friendly interface. You can customize the design and functionality of your site by downloading or purchasing templates and extensions, rather than coding. You can have multiple users working in the back-end of the same tool — and much more.

**Which ERP is Microsoft using?** Bring enterprise resource planning into your business Transform your business with Microsoft Dynamics 365—intelligent business solutions that seamlessly integrate ERP capabilities. Based in the cloud, Dynamics 365 apps help break down silos across your business by giving your team a unified view of operations.

**What is ERP vs CRM?** An enterprise resource planning (ERP) system is primarily used to help companies manage their finances and resources to control costs and meet company production goals. A customer relationship management (CRM) software helps companies manage the sales cycle and

customer experience.

**Is QuickBooks an ERP system?** The standard version of QuickBooks Online is not an ERP system. However, it does also have a lot of crossover functions with ERP software.

**What is the last step in booting a computer?** User space is launched. The last step in booting a computer is launching the user space, like a login window, GUI, and more.

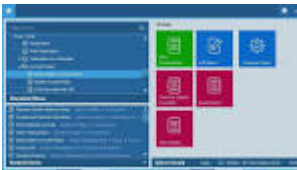
**What are the three basic types of file management?** File Management Definition - What are the 3 basic types of file management? There are three primary types of file systems used by operating systems: relational, network, and hierarchical. Use one or more of these types, or even mix and match, to safely store, protect, and remove digital assets as required.

**What is the best document management software?**



Figure

**Epicor Iscala 3.2 UserGuide PDF**, Epicor iScala 3.2 UserGuide.pdf - Free ebook download as PDF File (.pdf), Text File (.txt) or read book online for free. scribd.com/document/388054115/Epicor-iScala-3-2-UserGuide-pdf



Figure

**Epicor iScala 3.2 UserGuide.pdf**, This chapter describes a number of setup routines that define various aspects of the iScala application. With these routines, you can adjust the application to ... pdfcoffee.com/epicor-iscal-32-userguidepdf-pdf-free.html



Figure

**iScala**, Epicor iScala is a comprehensive ERP solution designed for SMBs for real-time collaboration across various industries. With embedded reporting, it streamlines ... epicor.com/en/products/enterprise-resource-planning-erp/iscal-32-userguidepdf-pdf-free.html

**(PDF) Iscala User Guide | Christian Missalie**, Objectives?Here, we investigated the inhibitory effects of coenzyme Q0 (CoQ0) on biofilm formation and the expression of virulence genes by Cronobacter ... academia.edu/40401636/Iscala\_User\_Guide

**iScala - Epicor**, iScala Administration Console User's Guide (ScaAdminConsole.chm). Epicor Service Connect Solution User's Guide (scs.chm). Service Management User's Guide (sm.epicor.com/en/products/enterprise-resource-planning-erp/iscal-32-userguidepdf-pdf-free.html) Epicor iScala is a comprehensive, %2Dborder trading%2C and compliance

**Explained: The Difference Between User Guide & User Manual**, It guides you and your company through a five-step process—from an in-depth analysis of your business requirements, through successful deployment—quickly ... proprofskb.com/blog/difference-between-user-guide-and-user-

What is a camera grip for? Does anyone still use SLR cameras? Does a battery grip improve performance?

<https://a4ssinc.com>

manual/#:~:text=While user manuals are more,navigate a product with ease

**Free Guide Creator: Create Step-by-Step Guides with screenshots**, Sep 9, 2017 — This particular PDF talk about the topic of ISCALA USER GUIDE, coupled with the whole set of supporting info plus more knowledge about that ... [hubspot.com/guide-creator](https://www.hubspot.com/guide-creator)

**How to Build the Best User Manual - TechSmith**, [techsmith.com/blog/user-documentation/](https://www.techsmith.com/blog/user-documentation/)

**iSCALA 2.3 SERVICE RELEASE 1**, [multisolutions.com/sa/Files/iScala 2 3 SR1 Release Guide pdf](https://multisolutions.com/sa/Files/iScala%202.3%20SR1%20Release%20Guide.pdf)

**Epicor® iScala®**, [softlabs.com.au/wp-content/uploads/2021/10/Epicor-iScala-Overview-BR-ENS pdf](https://softlabs.com.au/wp-content/uploads/2021/10/Epicor-iScala-Overview-BR-ENS.pdf)

**Iscala user guide by WilliamAnders3118**, [issuu.com/williamanders3118/docs/iscala\\_user\\_guide](https://www.issuu.com/williamanders3118/docs/iscala_user_guide)

**What is aircrack used for?** Aircrack-ng is the flagship tool of the Aircrack-ng suite, primarily used for cracking wireless networks encryption keys, such as WEP and WPA/WPA2.

**Does aircrack-ng still work?** Aircrack-ng is an excellent tool to use on wireless networks that use the WEP protection standard. The only problem is that WEP was deprecated in 2004. So there are some routines in Aircrack-ng that operate on the WPA network, only that standard isn't used anymore, and those utilities don't work anyway.

**Do you need a WiFi adapter for aircrack?** Setting up Hardware, Installing Aircrack-ng Many cards work with multiple drivers, some of which provide the necessary features for using aircrack-ng, and some of which do not. Needless to say, you need a wireless card which is compatible with the aircrack-ng suite.

**Can aircrack work on windows?** Windows. The Windows version of the Aircrack-ng suite does not have an install program. You must manually install (unzipping archive) the software.

**Does aircrack have a GUI?** Aircrack-gui is a python gui for aircrack-ng using gtk3.

**Is aircrack free?** Assess your Wi-Fi network security with these free tools Aircrack-ng allows you to asses the security of your Wi-Fi network with its suite of tools.

**What are the disadvantages of aircrack-ng?** One of the main drawbacks of aircrack-ng is that it requires a steep learning curve, as it is mostly based on command-line tools and has a complex syntax and options. It can also be difficult to install and configure, especially on non-Linux systems.

**Is aircrack-ng legit?** It's safe and legit if used properly, meaning your own system.

**Is aircrack open source?** Aircrack-ng is open source and has the following licenses: GPL v2 (Local copy)

**What is airodump used for?** airodump-ng is used for packet capturing of raw 802.11 frames for the intent of using them with aircrack-ng. If you have a GPS receiver connected to the computer, airodump-ng is capable of logging the coordinates of the found access points.

**Is aircrack-ng Open Source?** Aircrack-ng is open source and has the following licenses: GPL v2 (Local copy)

**How to connect WiFi without password or QR code?** Using The WPS WPS stands for Wi-Fi Protected Setup. Nowadays, all modern routers come with a WPS button. It is designed specially for a small environment or a home to connect to the Wi-Fi without a password. In short, it simplifies connecting to the Wi-Fi for Android/iOS devices.

**What is monitor mode in WiFi?** Unlike promiscuous mode, which is also used for packet sniffing, monitor mode allows packets to be captured without having to associate with an access point or ad hoc

network first. Monitor mode only applies to wireless networks, while promiscuous mode can be used on both wired and wireless networks.

**Main documentation**, airmon-ng -- Enable and disable monitor mode on wireless interfaces. ... User Documentation by Platform (Linux, Windows) · Links, References and Other ... aircrack-ng org/documentation.html

**newbie\_guide [Aircrack-ng]**, This tutorial will give you the basics to get started using the aircrack-ng suite. It is impossible to provide every piece of information you need and cover ... aircrack-ng org/doku.php?id=newbie\_guide

**How to Use Aircrack-ng: A Guide to Network Compromise**, 11 Jul 2024 — Throughout this tutorial, we'll cover the essential tools, including airmon-ng, airodump-ng, airgraph-ng, aireplay-ng, aircrack-ng, and airbase- ... stationx net/how-to-use-aircrack-ng-tutorial/

**Tutorial: How to Crack WPA/WPA2**, 7 Mar 2010 — This tutorial walks you through cracking WPA/WPA2 networks which use pre-shared keys. I recommend you do some background reading to better ... aircrack-ng org/doku.php?id=cracking\_wpa

**Exploring Network Security with Aircrack-ng**, Aircrack-ng, short for “Air-crack New Generation,” is an open-source suite of network security tools designed to assess and audit the security ... medium.com/@kushalpokhrel/exploring-network-security-with-aircrack-ng-a-comprehensive-guide-6bdcc8e7efbc

**How to Use Aircrack-ng: A Guide to Network Compromise**, 8 Oct 2018 — Crack WEP OmniPeek, aircrack-ng - Tutorial pro kartu ipw3945. ComView Wifi, Aircrack-ng packet injection - Navod pro Windows XP. Jak na WEP crack ... stationx net/how-to-use-aircrack-ng-tutorial/#:~:text=Aircrack%2Dng is the flagship,as WEP and WPA%2FWPA2

**Aircrack-ng review including alternatives - Comparitech**, 16 Jan 2023 — more Downloads... and how to compile aircrack-ng, distro packages... Changelog. Airmon-ng: Fix avahi killing. Airmon-ng: rewrite service stopping ... comparitech.com/net-admin/aircrack-ng-review/#:~:text=Aircrack%2Dng is an excellent,utilities don't work anyway

**newbie\_guide [Aircrack-ng]**, 9 Dec 2023 — This cheat sheet covers everything from basic commands to advanced Aircrack-ng features, ensuring you have a quick yet detailed reference at ... aircrack-ng org/doku.php?id=newbie\_guide#:~:text=Setting up Hardware%2C Installing Aircrack%2Dng,-The first step&text=Many cards work with multiple,with the aircrack%2Dng suite

**install\_aircrack [Aircrack-ng]**, All in one - Everything useful about Aircrack-ng. Contribute to luchthienphong1120/Aircrack-ng-handbook development by creating an account on GitHub. aircrack-ng org/doku.php?id=install\_aircrack#:~:text=install aircrack%2Dng%E2%80%9D-,Windows,(unzipping archive) the software

**Tutorials**, 29 Jan 2023 — We will be using the airmon-ng, airodump-ng, aireplay-ng, and Aircrack-ng tools from the Aircrack-ng suite. Let's look at their usage. Airmon-ng ... aircrack-ng org/doku.php?id=tutorial

**Introduction**, aircrack-ng org/doku.php

**Aircrack-ng: A Comprehensive Guide and Cheat Sheet**, denizhalil.com/2023/12/09/aircrack-ng-comprehensive-guide/

**luchthienphong1120/Aircrack-ng-handbook: All in one**, github.com/luchthienphong1120/Aircrack-ng-handbook

**How to use Aircrack-ng | Aircrack-ng tutorial [Practical ...]**, techofide.com/blogs/how-to-use-aircrack-ng-aircrack-ng-tutorial-practical-demonstration/

**How do I get to settings on Bush TV?** Open the TV menu. Scroll to Settings. Scroll to System. Scroll to Device Settings.

**How to access menu on Bush TV?** The control stick can be used to control many of the TV functions. Press the control stick UP (or DOWN) for a few seconds to enter SOURCES menu. Use the source menu to switch between input/ connections. A) Using the buttons on the remote control: 1) Press [SOURCE] - The source menu will appear.

**How to reset Bush TV to factory settings?**

**How to scan channels on Bush TV?**

**How should I set my TV settings?**

**Can you control a Bush TV with your phone?** Bush SmartRemote application can be used to control your Bush SmartTV over your mobile devices. By using the properties of your mobile devices such as touch screen and motion sensors, Bush SmartRemote application offers a more comfortable, convenient and improved way to control your Smart TV.

**Is there buttons on Bush TV?** Using the buttons on the Television: 1) Press [SOURCE]. 2) Scroll up / down using CH+/ CH- buttons to the input/source you require.

**How do I open my Bush TV remote control?**

**How do I change the source on Bush TV?**

**Why is my Bush TV saying menu not available?** The Network menu is not available when viewing a HDMI source. Change the source using the Source Button on the TV remote to Digital/Side AV/Back AV and open the menu to provide full access to the network settings.

**How to connect bush TV to Wi-Fi?**

**Why is my Bush TV not connecting?** Check that the TV is not situated too close or too far from the router, and that there are no obstructions that may be physically blocking the signal. Reset the WiFi router. Check if other devices are experiencing the same issue, or if it happens at a particular time.

**Why does my Bush TV say no signal?** The TV says 'No Signal'. This message will show when the TV is not receiving a signal, either through the aerial or an external device connected. Ensure you have selected the correct input source for viewing (for example, HDMI if you have an external device connected to the TV via HDMI).

**Why won't my TV find channels?** If you are experiencing picture break up or missing channels, your problem might be a reception problem and not due to interference. Therefore, you may just need to manually re-tune your television, this can often solve a number of common problems.

**How to fix TV when it says no signal?**

**How to set up TV channels?**

**What mode should my TV be on?** Instead, we've found that modes with names such as "cinema," "movie," and "expert" generally provide the best results.

**What is normal mode on TV?** Standard. This picture mode is often the mode manufacturer's set their televisions to. If you haven't messed with the settings on your TV since you bought it, you're most likely watching television in standard mode. What it looks like: Moderate contrast, sharpness and brightness with a "blue-ish" hue.

**Is Bush Smart TV an android?** Bush 80 cm (32 inch) HD Ready LED Smart Android TV Online at best Prices In India. For products requiring installation, returns are valid only when they are installed by Flipkart-authorized personnel.

**How to reset bush TV?**

**Does Bush TV have an app store?** You'll see a selection of apps already available in the Bush TV Store. But if you're hankering for something more, venture to Google Play Store or "Get More Apps". In the Play Store, use your remote to click the "Apps" section at the top.

**Is Bush TV a smart TV?** TV: Televisions Bush 32 Inch HD Ready Smart TV.

**Can you turn a Bush TV on manually?** How to turn on Bush TV using buttons on the TV? Locate the power button on the TV. Find the main button on the remote. Aim and press the red button.

**Is there an app to control Bush TV?** Bush TV Remote Control is a free and easy-to-use app for Android mobiles. It is a highly convenient and reliable tool for controlling your television set via infrared (IR) blaster. You can easily use it to turn your mobile device into a remote control device.

**Does Bush TV have buttons?** If the buttons on the side of the TV are not working and you don't have a remote control, it may be difficult to access the menu or source. You can try a few things to see if you can get it to work: Unplug the TV from the power source and leave it unplugged for a few minutes.

**Can I use my phone as a Bush TV remote?** Description of Remote for Bush TV Bush TV remote application allows you to control your Bush TV. Point your android device to Bush TV and you will be able to control it using a mobile device.

**How can I control TV without remote?** All TVs (smart and traditional) have physical switches either on the top, side or bottom of the body. You're likely to find a panel of switches from which you can navigate up or down, left and right. You can also control the volume and adjust the brightness directly from these physical switches.

**Is there buttons on Bush TV?** Using the buttons on the Television: 1) Press [SOURCE]. 2) Scroll up / down using CH+ / CH- buttons to the input/source you require.

**How do I change the HDMI settings on my Bush TV?**

**How do I fix my TV screen settings?** To find this option, go to your TV's settings menu and look for the display or picture options. Once you've found the option, select it and choose the option that best fits your screen. You may need to try a few different options until you find the one that works best for you.

**How to set up internet on Bush TV?**

**Why is my Bush TV not responding to my remote?** We would firstly advise changing the batteries and make sure you get the batteries the right way round. Does the TV respond to the buttons on the TV? If you have a digital camera, you will be able to do a camera test to see if the remote is even sending out a signal.

**How do TV remote buttons work?** TV remote controls work in a similar way but using a type of light called infrared (or IR for short). The remote control has an LED light in it which flashes really quickly to emit a message which is then picked up by the TV. The remote is called the transmitter, and the TV is called the receiver.

**How do I screen play on my bush TV?** From the Media share section, tap Screen mirroring. 5. When connected, the device's screen is displayed on the TV.

**How do I get to settings on a Bush TV?**



**Why is my Bush TV showing no signal?** The TV says 'No Signal'. This message will show when the TV is not receiving a signal, either through the aerial or an external device connected. Ensure you have selected the correct input source for viewing (for example, HDMI if you have an external device connected to the TV via HDMI).

**How do I switch to HDMI mode?** Switch to the HDMI source on your TV. Use the SOURCE or INPUT button on your TV or remote to select the HDMI port. You'll usually have to press it a few times until you reach the right port number. Once you reach the correct source, you should see the device's image on the screen.

**How do I fix my screen settings?**

**How do I set my TV picture settings?** To do this, open your TV's main menu settings, and go to the Picture controls. From here, you'll be able to select a Picture "mode," which applies a bunch of pre-sets to your TV's picture quality. Most TVs have a similar array of picture modes, such as Dynamic, Vivid, Standard, Movie, Cinema, and so on.

**How can I solve my TV problem?**

**How to reset bush TV?**

**How do I get Wi-Fi in the bush?**

**How to connect bush TV to Wi-Fi without remote?** Any keyboard or mouse with a USB plug should work, if your TV accepts keyboard or mouse as an input device. Once the device is plugged in, tap the arrow/enter keys on a keyboard or move your mouse to see if it works. Navigate to your TV settings and connect to Wi-Fi.

**User Guide - BUSH**, Allows you to retune the television for all digital channels, digital radio stations and analogue channels. Analogue Manual Tuning. Allows you to manually tune ... [umc-uk.co.uk/instruction-manuals/Argos%20Alba,%20Bush/User%20Guide%20-%20BUSH%20-%2022-207F,%2022-207FDVD,%2024-207F,%2024-207FDVD,W,P,S%20BUS-MAN-0011%20WEB.pdf](#)

**Bush LED55292UHDFVPHDR Instruction Manual**, 29 May 2023 — Topics: user manual, user guide, instruction manual, Bush, LED55292UHDFVPHDR ; Collection: manuals\_contributions; manuals; additional\_collections. [archive.org/details/BushLED55292UHDFVPHDRInstructionManual](#)

**Bush user manuals download**, Download Bush user manuals, owners guides and PDF instructions. [bushmanymanuals.com/](#)

**Instruction manual**, Use these Operating Instructions for guidance on how to use your Bush Android television. Unless otherwise stated, the remote control is used to operate the set ... [s3.infra.brandquad.io/accounts-media/SHRP/DAM/origin/7f562f5c-b6b7-11ed-aedc-5627d7e9fea9.pdf](#)

**Instruction manual**, Please read these instructions carefully. They contain important information which will help you get the best from your TV and ensure safe and correct ... [bush-support.s3.eu-west-2.amazonaws.com/documents/instruction-manual/9344114.pdf](#)

**Bush 40 Inch Smart FHD HDR LED Freeview TV - Argos Support**, Listing of all EXFO's user manuals. [argos-support.co.uk/1327294-bush-40-inch-smart-fhd-hdr-led-freeview-tv#:~:text=Open%20the%20TV%20menu%2CScroll%20to%20Device%20Settings](#)

**Bush - User Guide - 40-1350-WB-11B4-FEGP ... - UMC**, This document provides instructions for installing and operating a washing machine. It outlines important safety information including only using the ... [umc-uk.co.uk/instruction-manuals/Argos%20Alba,%20Bush/Bush%20-%20User%20Guide%20-%2040-1350-WB-11B4-FEGP-UK%20-%20BUS-MAN-0031%20v12.pdf](#)

**How to factory reset the TV — BUSH 32 inch HD LED SMART TV - Argos**, Device user manuals. The information on this page applies to the following GFiiber devices: Google Fiber Multi-Gig Router (GFRG300) ... [argos.tmtx.co.uk/en/topic/bush\\_32inchhdledsmarttv1378133/how\\_to\\_factory\\_reset\\_the\\_tv](#)

html

**What to do if Your Bush TV Shows No Signal - YouTube**, [youtube.com/watch?v=IwOr1q7PtfU](https://www.youtube.com/watch?v=IwOr1q7PtfU)

**User manuals**, [exfo.com/en/resources/technical-documentation/user-manuals/](https://www.exfo.com/en/resources/technical-documentation/user-manuals/)

**Bush WMDF714W Washing Machine User Manual**, [scribd.com/document/528715972/Bush-WMDF714W-Washing-Machine-User-Manual](https://www.scribd.com/document/528715972/Bush-WMDF714W-Washing-Machine-User-Manual)

**Device user manuals - Google Fiber Help**, [support.google.com/fiber/answer/2597690?hl=en](https://support.google.com/fiber/answer/2597690?hl=en)